

St. Luke's Clinically Integrated Providers

February 19, 2010

Presented by Susan R. Kiley
Vice President and Chief Managed Care Officer
St. Luke's Episcopal Health System

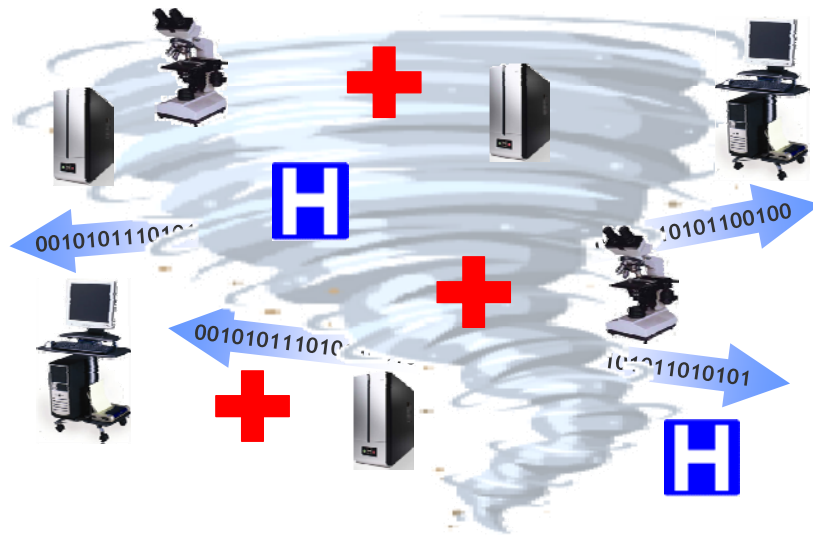
Federal Trade Commission

- Common information technology
 - To ensure exchange of all relevant patient data
- Clinical protocols
 - Development and adoption
 - Basis of care review
 - Mechanisms to ensure adherence
- Significant investment

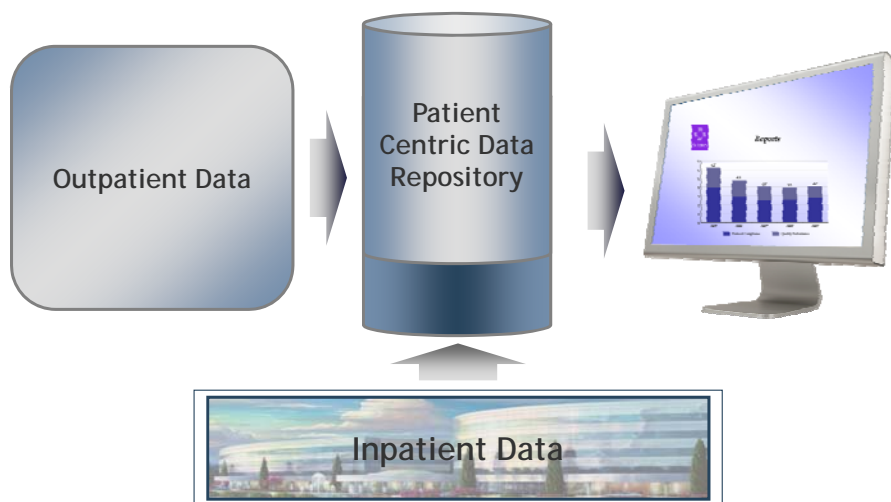


*Statements of Antitrust Enforcement in Health Care,
Department of Justice and Federal Trade Commission, September 1996*

Data in Chaos



Organized Measurable Data



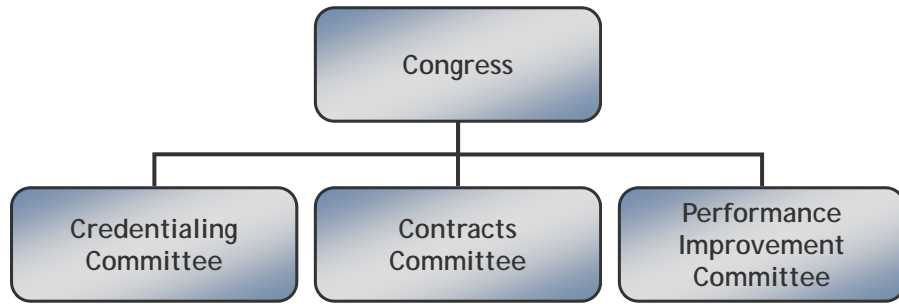
Our Program

- Patient-centric – Combining multiple data sources
- Must provide opportunity for all physicians to participate
- Must include multiple forms of care
- Utilizes data and tools to help physicians manage patient populations

Fundamental Changes

- Participation Agreements
- Protocols
- Data Collection
- Performance Improvement Committee
- Contracts Committee

Governance and Committee Structure



What are We Measuring?

✓ Process ✓

✓ Outcomes ✓

Benefits

- Validating Quality and Efficiency
 - Measure
 - Document
 - Report
 - Improve
- Coordinate care
- Eliminate duplication

9

St. Luke's Clinically Integrated Providers - FAQs

- Meets FTC definition
- Measures entire population of patients
- Referrals and interdependence
- Participation requirements
 - Exclusive
 - Provider performance measures
 - Patient education
- Significant investment
- Change in value to commercial payors

Thank You